

# Wi-Fi Locator Beacon LL (Long Life)



## The new Locator Beacon LL offers a longer battery life

Battery powered Wi-Fi Locator Beacons deploy quickly and easily to fine-tune the location accuracy needed in specific areas of your facility.

### Description

The Locator Beacon LL (Long Life) offers a cost effective way to increase location precision of the Help Alert<sup>®</sup> Wireless Panic Alert System and ExacTrack<sup>®</sup> Asset Management Solution, without adding new Wi-Fi access points. The new Locator Beacon LL provides an extended battery life, further reducing operating costs and increasing convenience.

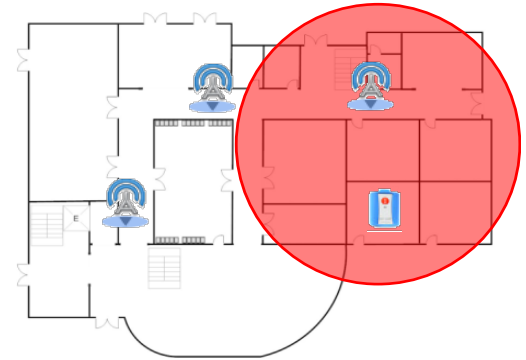
These devices enhance location accuracy by simply providing additional known points of reference used in RTLS location calculations.\* They can be placed throughout your facility as required by its unique layout and challenges. Configuration is often based on square footage, visual barriers, critical access points and incident history.

The new tag design is sleek and contemporary, with no visible hardware. Mounting options include permanent adhesive, and screw mounting with drywall anchors. With no wires or cabling required, deployment is faster and easier than ever.

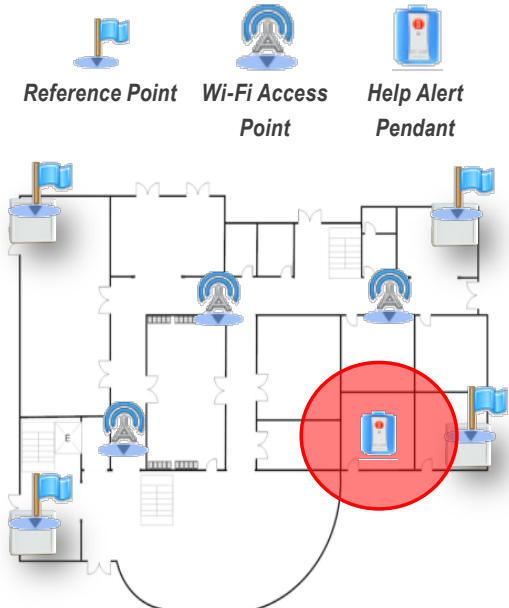
*\* When Locator Beacons are installed per recommendations, location accuracy of 8 - 12 ft. is often reported*

### Features

- Extended battery life (3 - 4 years, depending on usage)
- Leverages existing Wi-Fi network
- Over-the-air configuration and firmware updates
- Tamper resistive enclosure



Depiction of Location Accuracy *without* Locator Beacons in Place



Depiction of Location Accuracy *with* Locator Beacons in Place

### How Can We Help You?

For a custom solution that fits your needs, contact us at 800-669-9946 for a free quote or visit [www.rft.com](http://www.rft.com).



## Technical Specifications

RTLS Wi-Fi Reference Tag LL	
Dimensions (H x W x D)	2.9 in. x 3.1 in. x 1.6 in.
Weight	6.4 oz.
Color	Off-white
Power Requirements	3.3V Battery Pack
Frequency Range	FCC, 2.4-2.4835 GHz, Direct Sequence Spread Spectrum (DSSS), Channels 1-11, North America
Network Protocol	UDP/IP, addressing DHCP
Transmit Power	+17dBm
Physical Range	Open space: up to 330 ft. @ 1 Mbps; Closed office: up to 140 ft. @ 1 Mbps
Operating Temperature	32-158°F
Storage Temperature	-40-185°F
Wi-Fi Standard	802.11 b/g
Media Access	CSMA/CA
Security	WEP 128 bit, WPA2-PSK (AES)
Certification	FCC, Part 15 (US)

## Selection Chart

Part Number	Description
1000-9114	Wi-Fi Locator Beacon LL (for Help Alert and ExacTrack solutions)



Reverse side showing battery back. Back plate is permanently mounted via several options to allow the tag to be easily removed for maintenance.



Image is shown at full size

RF Technologies is a leading provider of safety and security solutions for the healthcare, hospitality and education markets, leveraging radio frequency identification (RFID) and PinPoint® real-time locating system (RTLS) technologies.

3125 North 126th Street, Brookfield, WI 53005 USA  
phone: 800.669.9946 fax: 262.790.1784

[www.rft.com](http://www.rft.com)